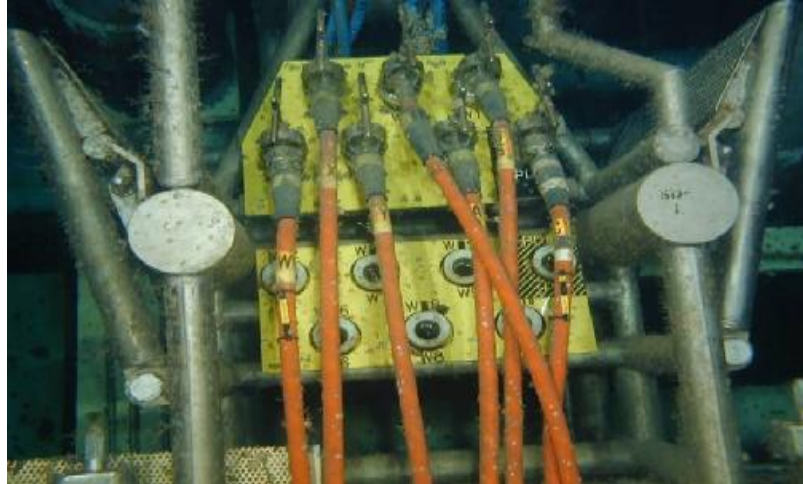


PRODUCT INFORMATION SHEET

Anguila Subsea Distribution System



DESCRIPTION

The Anguila Subsea Distribution System concept was developed in 1993 and has with some 10 000 assemblies installed worldwide become the leading systems for distribution of electrical power and signals. A subsea pressure and temperature compensated system using oil filled hose conduits ensures that the system always maintains an internal over-pressure relative to ambient throughout its working depth and temperature range.

FEATURES

- Double barrier against water ingress throughout
- Double electrical barriers throughout
- Temperature and pressure compensated
- Moderate internal over pressure maintained during operating conditions
- Generous volume compensating capacity
- Designed for rough ROV handling using standard manipulators
- Integrated longitudinal strain relief for enhanced snag load capacity
- Full torsion flexibility and ease of handling maintained
- Fitting featuring built-in wire fixture
- Oil filled non-conductive orange coloured conduit clearly visible through ROV cameras
- Design life of 25 year and tested for operation down to 4500 metres
- All currently used connectors, instruments and penetrators accommodated
- Available in up to 500 m in length

TYPICAL APPLICATIONS

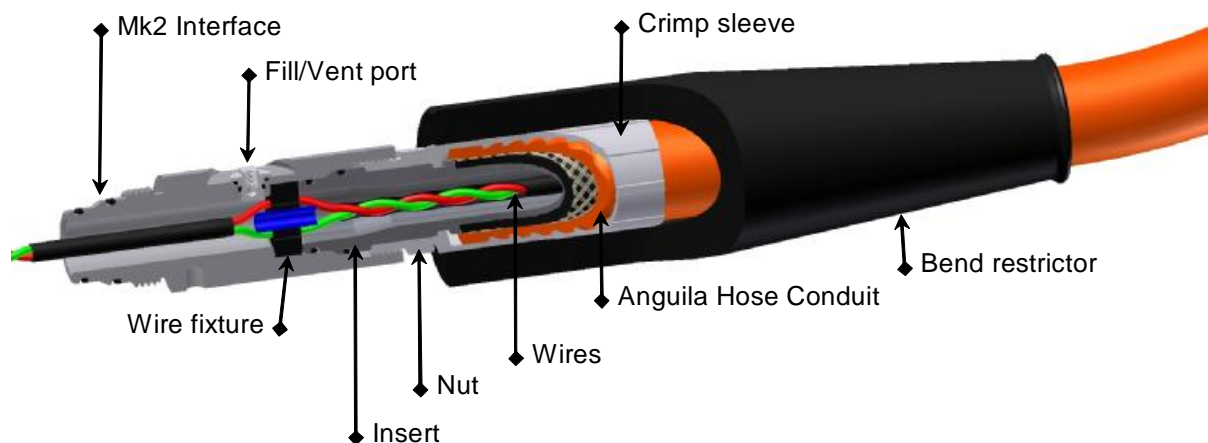
- ROV-installable and retrievable cable systems
- Manifold signal and power distribution
- X-tree harnesses

PRODUCT INFORMATION SHEET

- Electrical jumpers
- Test cables, shunts and protective plugs
- Junction boxes
- SDU applications
- Umbilical terminations
- Fibre optical cable systems
- HV power supply jumper
- Pressure/temperature compensation

KEY SYSTEM COMPONENTS

- Kevlar-reinforced hose conduit in standard sizes of 13, 20, 42, 51 and 73 mm i.d.
- MK2 swage type double barrier conduit fittings with enhanced snag load capacity
- Fill valves/adapters
- Bend restrictors
- Marshalling and junction boxes
- Wire splitters/splices



Electrical & Fiber Distribution System
ANGUILA[®]